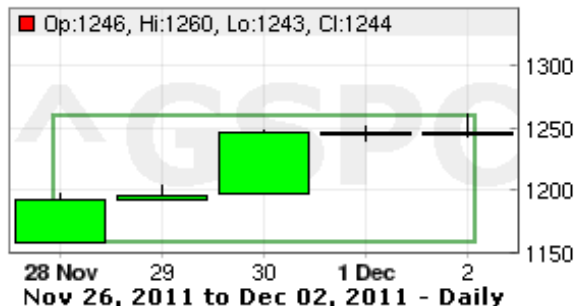


# WEEKLY REPORT

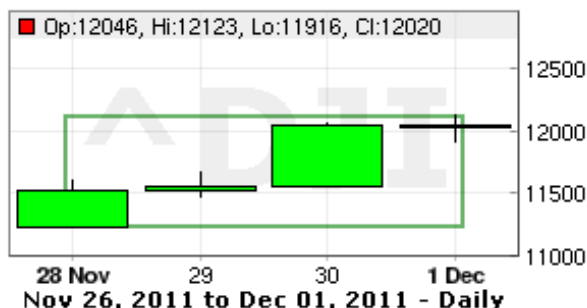
For the week of Monday, November 28th, 2011 to Friday, December 2nd, 2011

## Weekly Market Snapshot and Top Stories

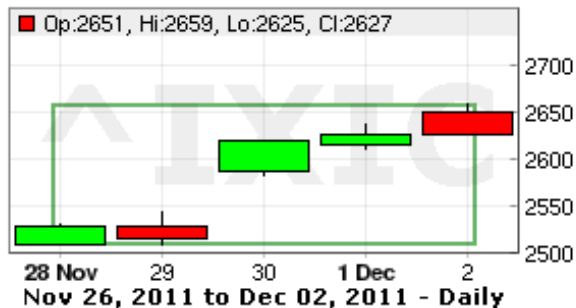
### S&P 500:



### DOW Jones Industrial:



### NASDAQ:



Name	Last	Wk Chg.	%
DJIA	11,975.18	743.40	6.62%
S&P 500	1,244.28	85.61	7.39%
NASDAQ	2,626.93	185.42	7.59%
RUSS 2K	735.02	68.86	10.34%
FTSE 100	5,552.29	387.69	7.51%
DAX	6,080.68	587.81	10.70%
CAC 40	3,164.95	307.98	10.78%
NIKKEI 225	8,643.75	483.74	5.93%
HANG SENG	19,040.39	1,350.91	7.64%

### This Weeks Top Stories

- Stock futures mixed after sharp rally:**  
*Tuesday, November 29th, 2011 05:35am*  
 Stock index futures pointed to a mixed open on Wall Street on Tuesday, with futures for the S&P 500 up 0.15 percent, Dow Jones futures up 0.1 percent and Nasdaq 100 futures down 0.27 percent at 4:19 a.m. ...
- FCC to let AT&T pull merger application:**  
*Tuesday, November 29th, 2011 05:20pm*  
 The FCC granted AT&T Inc's request to withdraw its application for approval of its purchase of T-Mobile USA, an FCC official said on Tuesday.
- S&P may cut France rating outlook to negative: report:**  
*Monday, November 28th, 2011 08:20pm*  
 Credit rating agency Standard & Poor's could change the outlook for France's triple-A rating to negative within the next 10 days, a French newspaper reported on Monday, citing several sources. Such a move ...
- Fitch warns of U.S. downgrade if no budget deal in 2013:**  
*Monday, November 28th, 2011 05:05pm*  
 Fitch Ratings on Monday warned it may cut the United States' AAA rating if policymakers fail to agree in 2013 on a plan to reduce the country's ballooning budget deficits. The ratings agency revised to ...
- Facebook gearing up for 2012 IPO: source:**  
*Monday, November 28th, 2011 10:00pm*  
 Facebook, the world's largest Internet social network, is preparing for an initial public stock offering next year, according to a source familiar with the matter. Facebook is exploring raising \$10 billion, ...
- Stock futures signal losses, focus on banks:**  
*Wednesday, November 30th, 2011 04:50am*  
 Stock index futures pointed to a weaker open for equities on Wall Street on Wednesday, with futures for the S&P 500, for the Dow Jones and for the Nasdaq 100 down 0.4-0.7 percent. Standard & Poor's reduced ...
- Exclusive: THL eyes buyout of Yahoo's U.S. business:**  
*Monday, November 28th, 2011 09:55pm*  
 Thomas H. Lee Partners is interested in buying the U.S. operations of Yahoo Inc, breaking away from other bidders that are for now eyeing either a minority stake or teaming up with the Internet giant's ...
- Pressure mounts on Europe as finance ministers meet:**  
*Tuesday, November 29th, 2011 03:35am*  
 Euro zone finance ministers are to agree on Tuesday the details of bolstering their bailout fund to help prevent contagion in bond markets, under pressure from the United States and ratings agencies to ...
- Bank-reform author, Barney Frank, bows out:**  
*Monday, November 28th, 2011 12:20pm*  
 Rep. Barney Frank, a longtime Democratic lawmaker from Massachusetts and co-author of the landmark Dodd-Frank bank reform law, announced Monday that he won't seek re-election in 2012.
- American Airlines files for bankruptcy:**  
*Tuesday, November 29th, 2011 08:00pm*  
 American Airlines filed for bankruptcy protection on Tuesday to cut labor costs in the face of high fuel prices and dampened travel demand, capping a prolonged descent for what was once the largest U.S. ...

# WEEKLY REPORT

For the week of Monday, November 28th, 2011 to Friday, December 2nd, 2011

## Weekly Chart of the S&P 500 Page 2 of 8

**S&P 500 INDEX,RTH (^GSPC)**

1,244.28 vol. 664,845,248

No Sector/Industry Data

change **-0.30**  
 % fr. open **-0.14%**  
 % change **-0.02%**

as of 2011-12-02 04:33pm



# WEEKLY REPORT

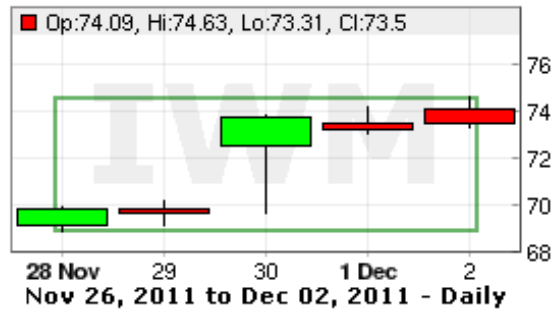
For the week of Monday, November 28th, 2011 to Friday, December 2nd, 2011

## 5 Day Candlestick Charts of the Major ETFs Page 3 of 8

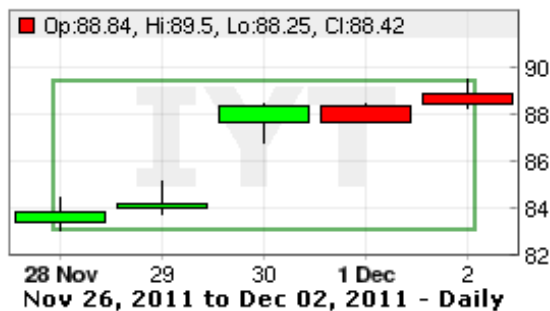
### NASDAQ 100:



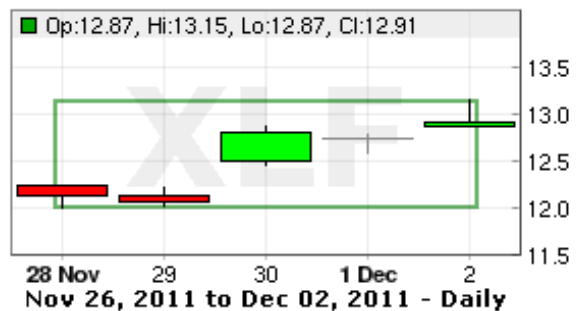
### Russell 2000 Index:



### DOW Jones Transportation Index:



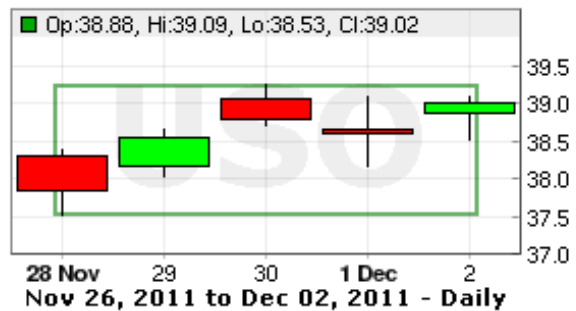
### Financial SPDR Fund:



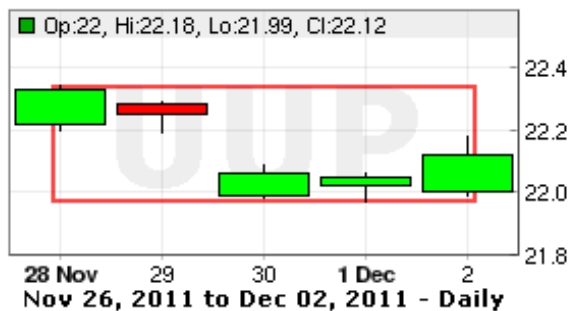
### Gold ETF:



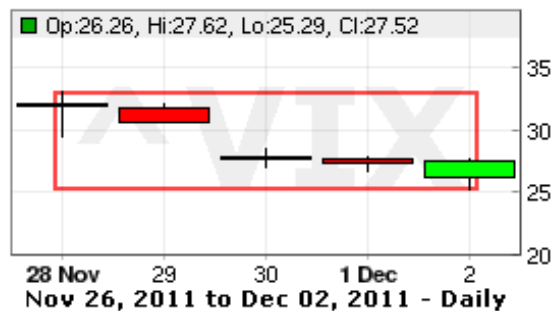
### US Oil Fund:



### US \$ Index Bullish Fund:



### Volatility Index:



# WEEKLY REPORT

For the week of Monday, November 28th, 2011 to Friday, December 2nd, 2011

## DOW Components

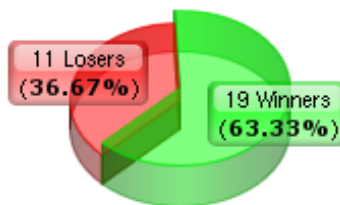
#	Symbol ▲	Price	% Open	% Day	% Week	% Month	% Quarter	% Year	% YTD
1	AA	9.91	-0.70%	1.02%	10.73%	-7.38%	-17.49%	-29.92%	-36.92%
2	AXP	48.23	-0.23%	0.92%	7.18%	-4.15%	-0.21%	9.22%	13.00%
3	BA	71.30	-0.56%	0.45%	13.57%	11.44%	12.09%	9.22%	9.46%
4	BAC	5.64	-0.53%	1.99%	9.30%	-15.95%	-22.10%	-52.28%	-60.14%
5	CAT	96.29	-1.49%	-0.55%	11.04%	2.50%	13.39%	9.95%	4.27%
6	CSCO	18.55	-0.70%	-0.16%	6.00%	3.92%	20.85%	-1.80%	-8.67%
7	CVX	101.69	-1.31%	-0.14%	10.19%	-1.97%	6.37%	24.32%	14.45%
8	DD	47.02	-1.69%	-0.57%	7.20%	-0.84%	1.45%	-2.06%	-3.65%
9	DIS	36.61	0.77%	1.72%	9.25%	7.46%	12.78%	-1.56%	-3.20%
10	GE	16.09	0.31%	1.13%	9.46%	-0.98%	3.07%	-1.59%	-10.56%
11	HD	39.94	0.63%	1.53%	10.39%	11.88%	25.24%	23.12%	16.55%
12	HPQ	27.68	-2.84%	-1.91%	9.02%	6.83%	14.29%	-35.07%	-34.75%
13	IBM	189.66	-0.14%	0.11%	7.12%	3.54%	14.09%	33.11%	31.18%
14	INTC	24.64	-1.52%	-1.12%	8.40%	4.23%	26.81%	16.84%	21.69%
15	JNJ	63.47	-2.16%	-1.52%	3.59%	0.63%	-0.05%	4.25%	3.81%
16	JPM	32.33	4.70%	6.14%	13.52%	-3.89%	-5.96%	-17.23%	-24.87%
17	KFT	36.50	-0.30%	0.0%	6.35%	5.37%	7.42%	25.17%	18.51%
18	KO	66.38	-1.60%	-0.67%	3.28%	-1.37%	-3.52%	5.21%	4.03%
19	MCD	95.70	-0.70%	0.21%	4.70%	4.21%	8.27%	22.94%	28.15%
20	MMM	79.76	-2.00%	-0.67%	4.77%	2.90%	1.22%	-5.88%	-5.71%
21	MRK	35.48	-1.20%	-0.56%	7.00%	3.77%	10.91%	5.03%	1.66%
22	MSFT	25.22	-1.41%	-0.24%	3.79%	-2.29%	-1.48%	-4.83%	-8.16%
23	PFE	19.89	-1.19%	-0.70%	7.80%	2.90%	8.93%	24.94%	17.83%
24	PG	64.66	-0.03%	0.91%	6.00%	2.86%	4.25%	6.35%	2.25%
25	T	28.96	-0.07%	0.42%	5.65%	-0.41%	4.85%	8.18%	3.61%
26	TRV	54.24	-2.48%	-1.45%	1.55%	-6.01%	11.93%	1.04%	-0.73%
27	UTX	76.54	-1.38%	-0.05%	7.74%	0.14%	8.48%	-1.05%	-1.37%
28	VZ	37.85	-0.13%	0.21%	7.07%	2.85%	7.96%	22.34%	9.81%
29	WMT	58.09	-1.34%	-0.89%	2.11%	2.16%	11.65%	9.15%	8.65%
30	XOM	79.79	-1.09%	0.0%	7.97%	3.76%	11.33%	14.30%	9.05%
#	Symbol ▲	Price	% Open	% Day	% Week	% Month	% Quarter	% Year	% YTD
			Total	Total	Total	Total	Total	Total	Total
			-22.38%	5.54%	221.75%	38.12%	196.81%	121.42%	19.23%
			Average	Average	Average	Average	Average	Average	Average
			-0.75%	0.20%	7.39%	1.27%	6.56%	4.05%	0.64%

### Performance of DOW JONES INDUSTRIAL Components

Weekly Win Ratio



Monthly Win Ratio



Year To Date Win Ratio



# WEEKLY REPORT

For the week of Monday, November 28th, 2011 to Friday, December 2nd, 2011

## Commodities

Page 5 of 8

### Energy

Name	Symbol	Close	Change	% Change
BRENT CRUDE FUTR (USD/bbl.)	BRENT	110.16	1.17	1.07
GAS OIL FUT (ICE) (USD/MT)	GAS	946.25	8.00	0.85
GASOLINE RBOB FUT (USd/gal.)	GASOLINE	263.50	7.71	3.01
HEATING OIL FUTR (USd/gal.)	HEATING	299.19	2.24	0.75
NATURAL GAS FUTR (USD/MMBtu)	NATGAS	3.58	-0.06	-1.75
WTI CRUDE FUTURE (USD/bbl.)	CRUDE	100.97	0.77	0.77

### Agriculture

Name	Symbol	Close	Change	% Change
CANOLA FUTR (WCE) (CAD/MT)	CANOLA	502.30	2.40	0.48
COCOA FUTURE (USD/MT)	COCOA	2,228.00	-59.00	-2.58
COFFEE 'C' FUTURE (USd/lb.)	COFFEE	229.55	-6.15	-2.61
CORN FUTURE (USd/bu.)	CORN	595.25	-6.25	-1.04
COTTON NO.2 FUTR (USd/lb.)	COTTON	91.84	0.54	0.59
FCOJ-A FUTURE (USd/lb.)	FCOJ-A	177.60	0.35	0.20
LUMBER FUTURE (USD/1000 board feet)	LUMBER	227.00	7.40	3.37
OAT FUTURE (USd/bu.)	OAT	315.00	-5.00	-1.56
ROUGH RICE (CBOT) (USD/cwt)	ROUGH	14.46	-0.32	-2.17
SOYBEAN OIL FUTR (USd/lb.)	SOYBEAN	50.25	0.55	1.11
SUGAR #11 (WORLD) (USd/lb.)	SUGAR	23.45	-0.14	-0.59
WHEAT FUTURE(KCB) (USd/bu.)	WHEAT	681.50	12.50	1.87
WOOL FUTURE (SFE) (cents/kg)	WOOL	1,335.00	-20.00	-1.48

### Metals

Name	Symbol	Close	Change	% Change
HKMEX GOLD (USD/t oz.)	GOLD	1,757.70	5.70	0.33
HKMEX SILVER (USD/t oz.)	SILVER	33.76	0.24	0.72
COPPER FUTURE (USd/lb.)	COPPER	358.30	4.90	1.39

### Livestock

Name	Symbol	Close	Change	% Change
CATTLE FEEDER FUT (USd/lb.)	CATTLE	146.73	0.63	0.43
LEAN HOGS FUTURE (USd/lb.)	LEAN	89.23	-1.05	-1.16
LIVE CATTLE FUTR (USd/lb.)	LIVE	123.08	-0.65	-0.53

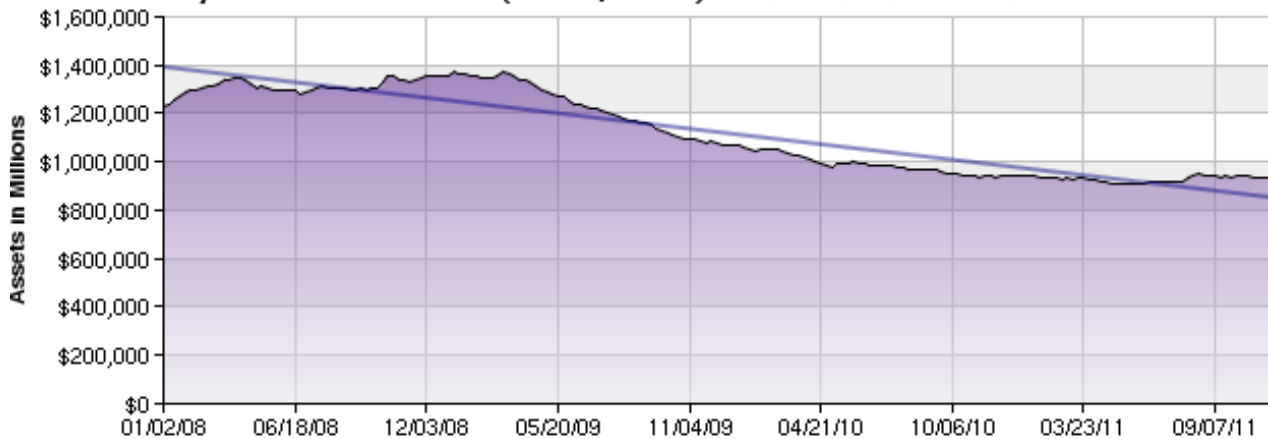
# WEEKLY REPORT

For the week of Monday, November 28th, 2011 to Friday, December 2nd, 2011

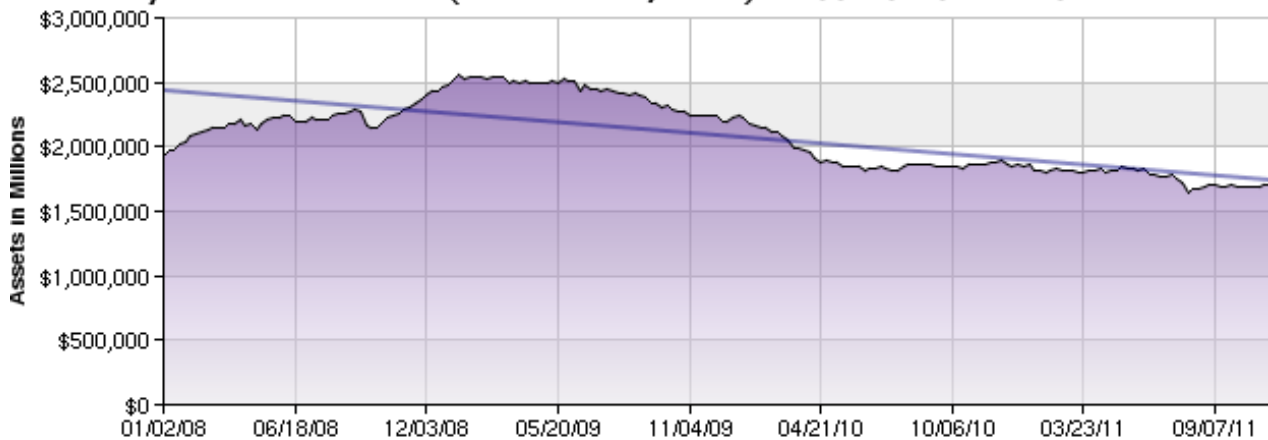
**Money Market Net Assets (all / total) - '2008-01-02' to '2011-11-16'**



**Money Market Net Assets (retail / total) - '2008-01-02' to '2011-11-16'**



**Money Market Net Assets (institutional / total) - '2008-01-02' to '2011-11-16'**



# WEEKLY REPORT

For the week of Monday, November 28th, 2011 to Friday, December 2nd, 2011

## Upcoming Economic Events

Mon - Dec 5th	Tue - Dec 6th	Wed - Dec 7th	Thu - Dec 8th	Fri - Dec 9th
<b>Factory Orders</b> 10:00am <b>ISM Non-Mfg Index</b> 10:00am <b>4-Week Bill Announcement</b> 11:00am <b>3-Month Bill Auction</b> 11:30am <b>6-Month Bill Auction</b> 11:30am <b>Charles Evans Speaks</b> 12:10pm	<b>ICSC-Goldman Store Sales</b> 7:45am <b>Redbook</b> 8:55am <b>4-Week Bill Auction</b> 11:30am <b>Treasury STRIPS</b> 3:00pm	<b>MBA Purchase Applications</b> 7:00am <b>Quarterly Services Survey</b> 10:00am <b>EIA Petroleum Status Report</b> 10:30am <b>Consumer Credit</b> 3:00pm	<b>Jobless Claims</b> 8:30am <b>10-Yr Note Announcement</b> 9:00am <b>3-Yr Note Announcement</b> 9:00am <b>30-Yr Bond Announcement</b> 9:00am <b>Wholesale Trade</b> 10:00am <b>EIA Natural Gas Report</b> 10:30am <b>3-Month Bill Announcement</b> 11:00am <b>5-Yr TIPS Announcement</b> 11:00am <b>52-Week Bill Announcement</b> 11:00am <b>6-Month Bill Announcement</b> 11:00am <b>Fed Balance Sheet</b> 4:30pm <b>Money Supply</b> 4:30pm	<b>International Trade</b> 8:30am <b>Consumer Sentiment</b> 9:55am

**WEEKLY REPORT***For the week of Monday, November 28th, 2011 to Friday, December 2nd, 2011***Disclosures and Disclaimer****Page 8 of 8**

Additional information available upon request. Although the material contained herein has been prepared from sources and data that we believe to be reliable, neither the author(s), Trade Wall Street Financial, nor any of their respective affiliates makes any representations or warranties with respect to the accuracy, completeness, or timeliness of this information, and it should not be relied upon as such. Neither the author(s), Trade Wall Street Financial, nor any of their respective affiliates is responsible for any errors or omissions in this report, and specifically disclaim all warranties, including without limitation, warranties of fitness for a particular purpose. Furthermore, neither the author(s), Trade Wall Street Financial, nor any of their respective affiliates makes any guarantee or other promise as to any results that may be obtained from using this information. The material has been prepared or is distributed solely for informational purposes and does not constitute an offer, obligation, solicitation, or investment advice. This material is not to be construed as investment services in any jurisdiction where such offers or solicitations would be illegal. Trade Wall Street Financial and affiliated persons assume no responsibility, and shall not be liable, for any use of the above information.

The opinions expressed in this email and/or its attachments are those of the author(s) and are not necessarily those of Trade Wall Street Financial. Opinions and estimates are as of a certain date and subject to change without notice. The financial product or strategy described above is intended only for experienced and qualified investors. Individual investments, investment services, or strategies mentioned herein may not be suitable or appropriate for every investor or every situation. You should not make any investment decision without first consulting your financial advisor and conducting your own research and due diligence, including carefully reviewing the prospectus and other public filings of the issuer. While past performance may be analyzed, past performance should not be considered indicative of future performance. Investing in capital markets involves substantial risk. You should be aware that investments can fluctuate in price, value and/or income, and you may get back less than you invested.

The fact that an organization or website may be referred to as a citation and/or a potential source of further information does not mean that the author(s), Trade Wall Street Financial, or any of their respective affiliates endorse the information the organization or website may provide or recommendations it may make.

Copyright© 2007-2011, Trade Wall Street Financial, Washington D.C., USA. All rights reserved. Proprietary, not to be reproduced, transferred or distributed in any form without prior written permission from Trade Wall Street Financial. The above is delivered on an "as is" basis without warranty. It is not an offer, solicitation, or recommendation to purchase any security or the services of any organization unless otherwise noted. Trade Wall Street Financial and/or its employees may buy, hold, trade or sell any security or financial instrument described herein.

Trade Wall Street Financial is a subsidiary of TWS Financial, LLC, a member of the Financial Industry Regulatory Agency (FINRA) and the Securities Investors Protection Corporation (SIPC).